

ALPINE VT3000

Variable Temperature Glass Front Merchandiser



A Wittern Group Company

ONE MACHINE... MANY POSSIBILITIES

Vend snacks, sodas, juices, milk, yogurts, and other foods best served cold from one versatile machine.

- **Highest energy efficiency** in the industry using only 3.9 Kwh/day



TIER II



Energy
Performance
Rendement
Énergétique

California
Energy
Commission
Approved

- **New LED lighting option** enhances product presentation, requires no service for a minimum of **5+ years** and reduces lighting energy costs by **40%** over fluorescent equipped models
- **NAMA health safety on lower trays**
- **New rigid delivery box** accommodates taller product and includes removable box bottom for easy cleaning



U-Select-It
The choice for...

Quality equipment built to last.

Innovative features to help you sell more effectively

Versatile designs and products that allow you to grow at your pace



Full Line Vending Products & Services

Dispense a wide variety of foods & beverages.



Adjustable Snack & Candy Selections

Configurable to almost any package size in the field with no need for tools
 Full selection (5-3/4"W)
 3/4 selection (4-5/16"W)
 Candy selection (2-7/8"W)



LED Lighting Option

Enhances product presentation promoting more sales. No bulb servicing for 5 years. Energy efficient and eco friendly.



Versatile Steel Beverage Trays Standard

Hold up to 60 canned or bottle beverages



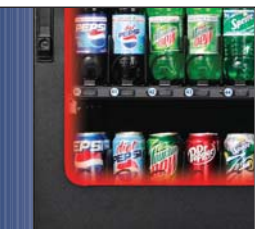
iVend Guaranteed Delivery System

Keeps customers satisfied and reduces service calls for misloaded product.



Optional High Capacity Can Tray

Add 100 can capacity to a single tray with this patented 4 selection option.



Optional Heated Glass

Optimum for use in high humidity locations.



Door-In-Cabinet Design

Adds security and rigidity to an already solid package.

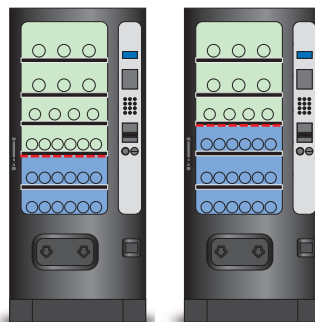


Simple yet full featured interfaces

- Programmable LED display
- Standard peripheral opening for additional payment or POS systems
- Back lighted keypad with Braille identification
- MDB support for all industry standard devices including cash, coin, debit and credit systems
- DEX data output support
- Full featured controller with sales and accounting:
 - Price setting by selection, row or machine
 - Free vend and Combo vend modes
 - Flexible space to selection setting
 - Time of day discounting
 - Time of day shutdown modes for energy savings and secured vend times
 - Programmable point of sale messages
 - Programmable coupon and token values
 - Coin and bill rejection rate counts
 - Accountability display by selection, row or machine
 - Talker device support for sight impaired

Configure to meet your merchandising needs.

Movable barrier tray allows you to adjust temperature zones.



Performance

Proven Operating Environment

- High: 100°F (38°C) @ 90% RH

Average Temperature Differential Range of 20° between upper compartment and Health Controlled lower compartment at 80° F (26°C) ambient.

- Super 1/3 Hp compressor uses only 3.9 Kwh/day @ 75°F (24°C), 45% RH

Features

VT3000

NOTE: Selections, capacities and weight vary depending on model and configuration.

Selections	Up to 36 Items
Standard Capacity	Varies with configuration
Pricing	Individual from \$0 to \$655.35
Payment Systems	All Industry standard MDB compatible devices
Communication	DEX/UCS
Standard Features	iVend® Delivery Sensors Triple Pane Argon Filled Door Glass with Low-E Coating
Optional Features	Custom helix and tray configurations, Heated Door Glass

Specifications

Height	72" (183 cm)
Width	29 1/2" (75 cm)
Depth	38" (97 cm)
Shipping Weight	725 lbs. (328 kg)
Electrical Services	115 VAC/60Hz, 7.0 Amps (230 VAC/50Hz, 3.5 Amps)
With Heated Glass	115 VAC/60Hz, 8.0 Amps (230 VAC/50Hz, 4.0 Amps)
Refrigeration	Super 1/3 HP, R134a Closed System

In order to bring you the best products possible we continue to improve product design and performance and as such specifications are subject to change without notice.



U-Select-It
 8040 University Boulevard
 Des Moines, Iowa 50325
 1-800-247-8709 • Fax: 515-274-0390
 www.uselectit.com



California Energy Commission Approved

© 2010 U-Select-It